

Prevalence of common mental disorders in general practice in Europe



Ruth Kalda
University of Tartu
Estonia

Euract council meeting, Cyprus,
10 Oct 2008

Background

According to previous studies:

- Depression occurs in around 10% of general practice attendees
- The estimated prevalence of generalised anxiety disorder is 5–16%, and of panic disorder between 1.5 and 13%
- Most people with anxiety or depression will visit their general practitioner, whether or not they complain of their psychological symptoms



- **Main aim of the study:** to develop a risk index for onset of major depression over 12 months in European general practice attendees (PREDICT study)
- **Aim of the current study:** to compare prevalence of common mental disorders in general practice attendees in different European countries



Method

- **Prospective** study in 6 European countries (Slovenia, Estonia, UK, Netherlands, Portugal, Spain) from April 2003-September 2004
- **Consecutive** general practice attendees 18-74 years of age

Assessment of: 1) major depression according to DSMIV (CIDI)

2) anxiety and panic syndrome in the previous six months (Patient Health Questionnaire (PHQ)).

3) risk factors (specially constructed and validated questionnaire)

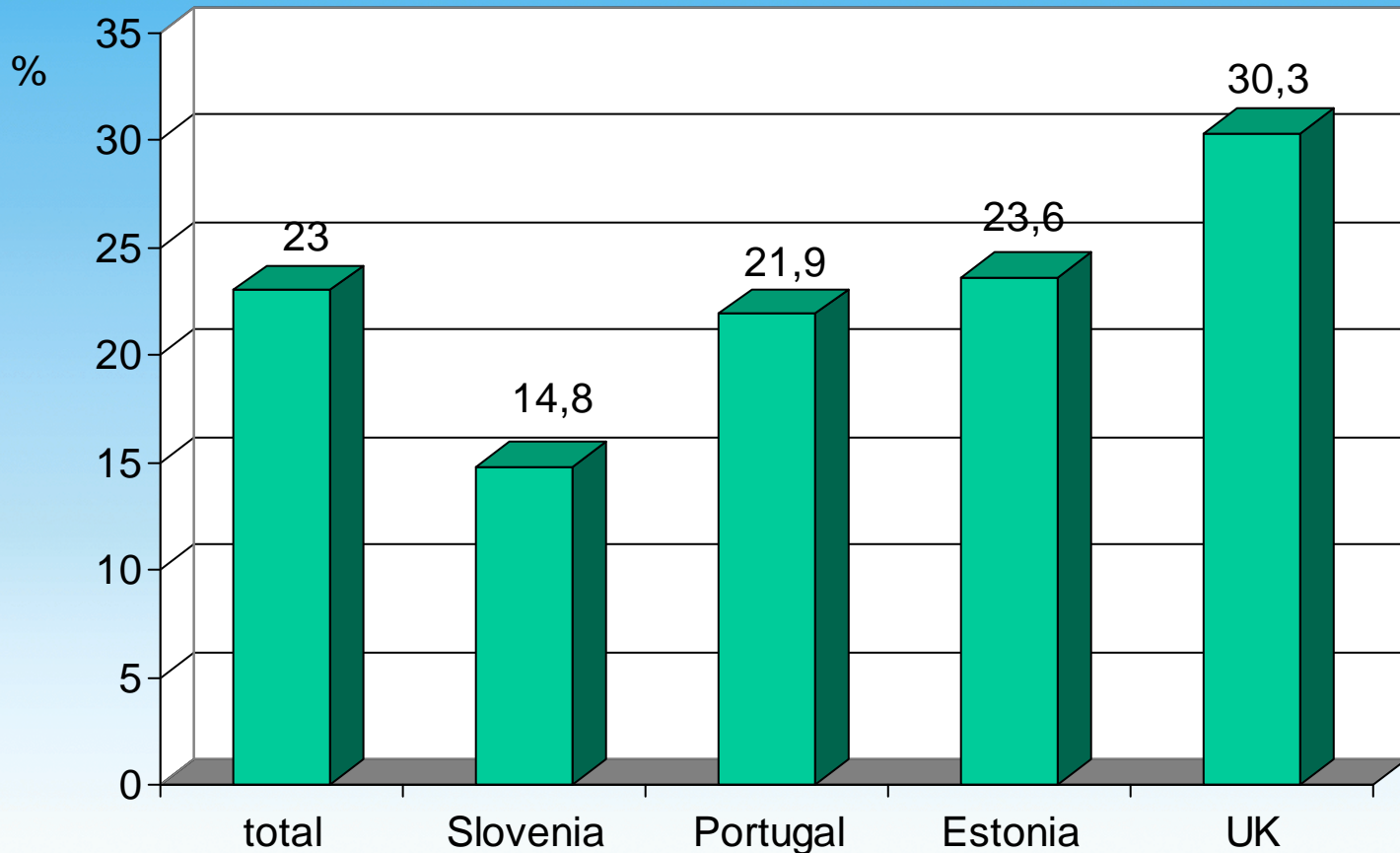


Study population

- Total N = 7209 (60% of those approached)
- Male N= 2344 (33%)
- Female N= 4865 (67%)

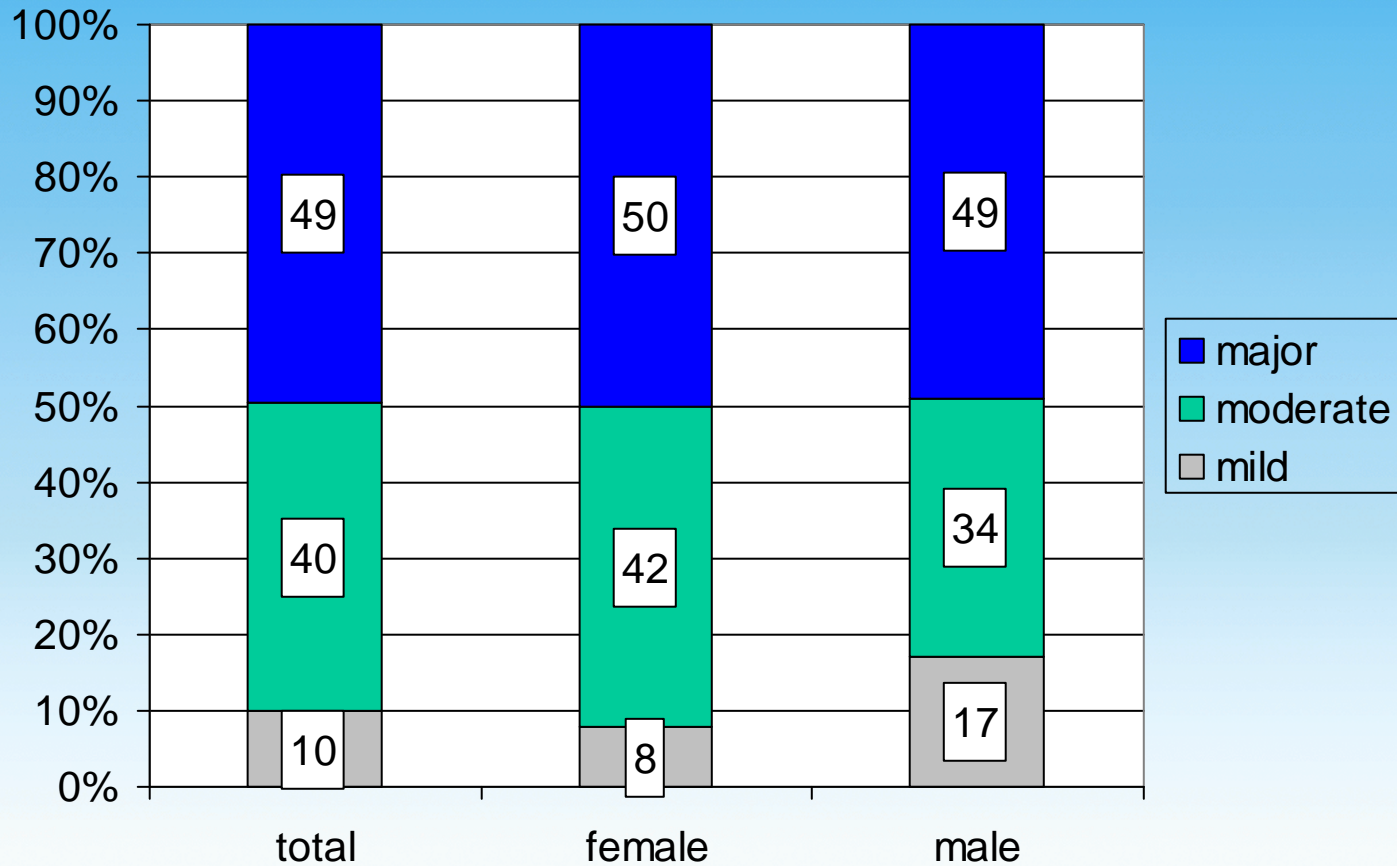


Prevalence of depression during previous 6 months

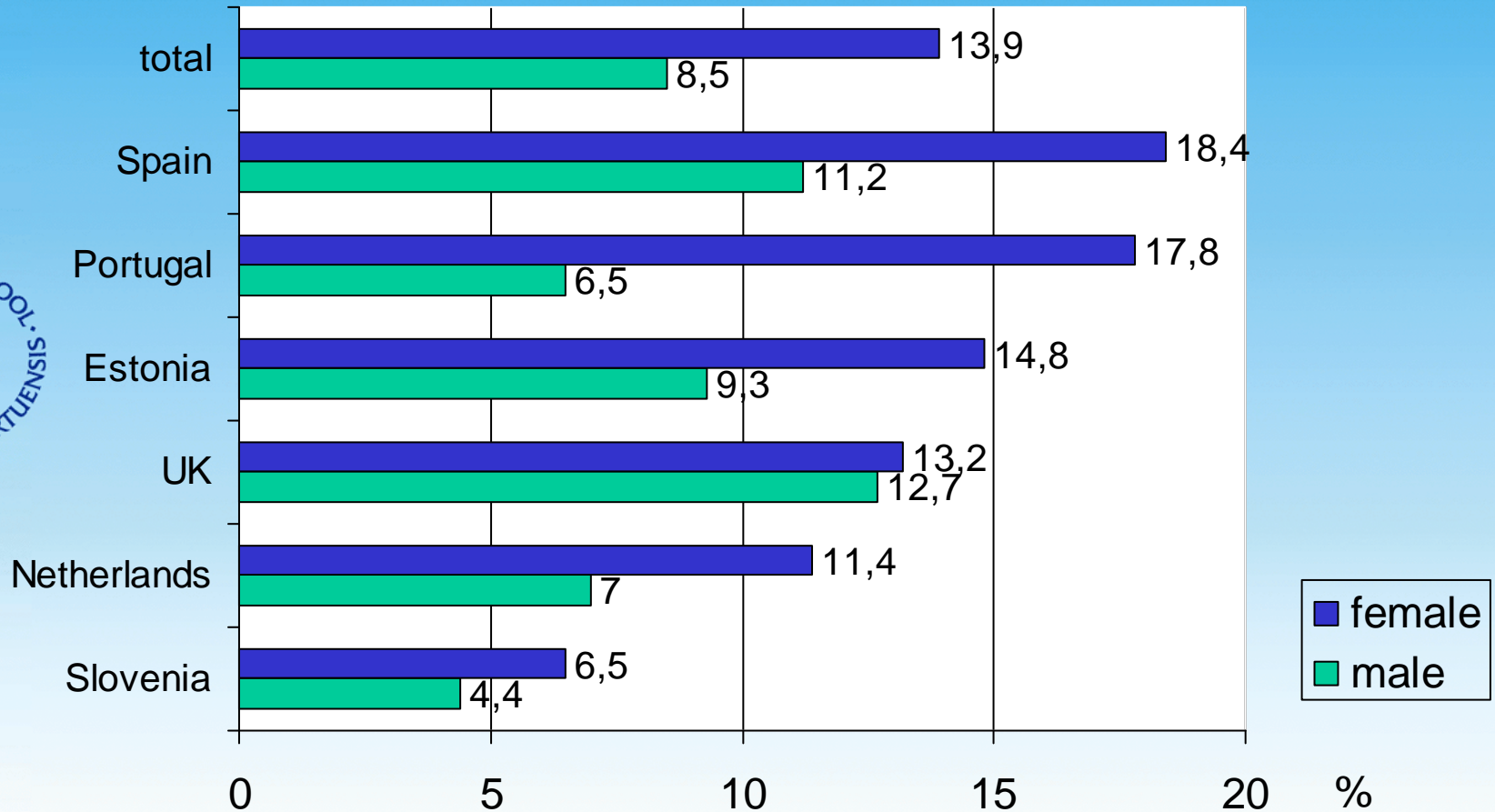


Euract council meeting, Cyprus,
10 Oct 2008

Severity of depression

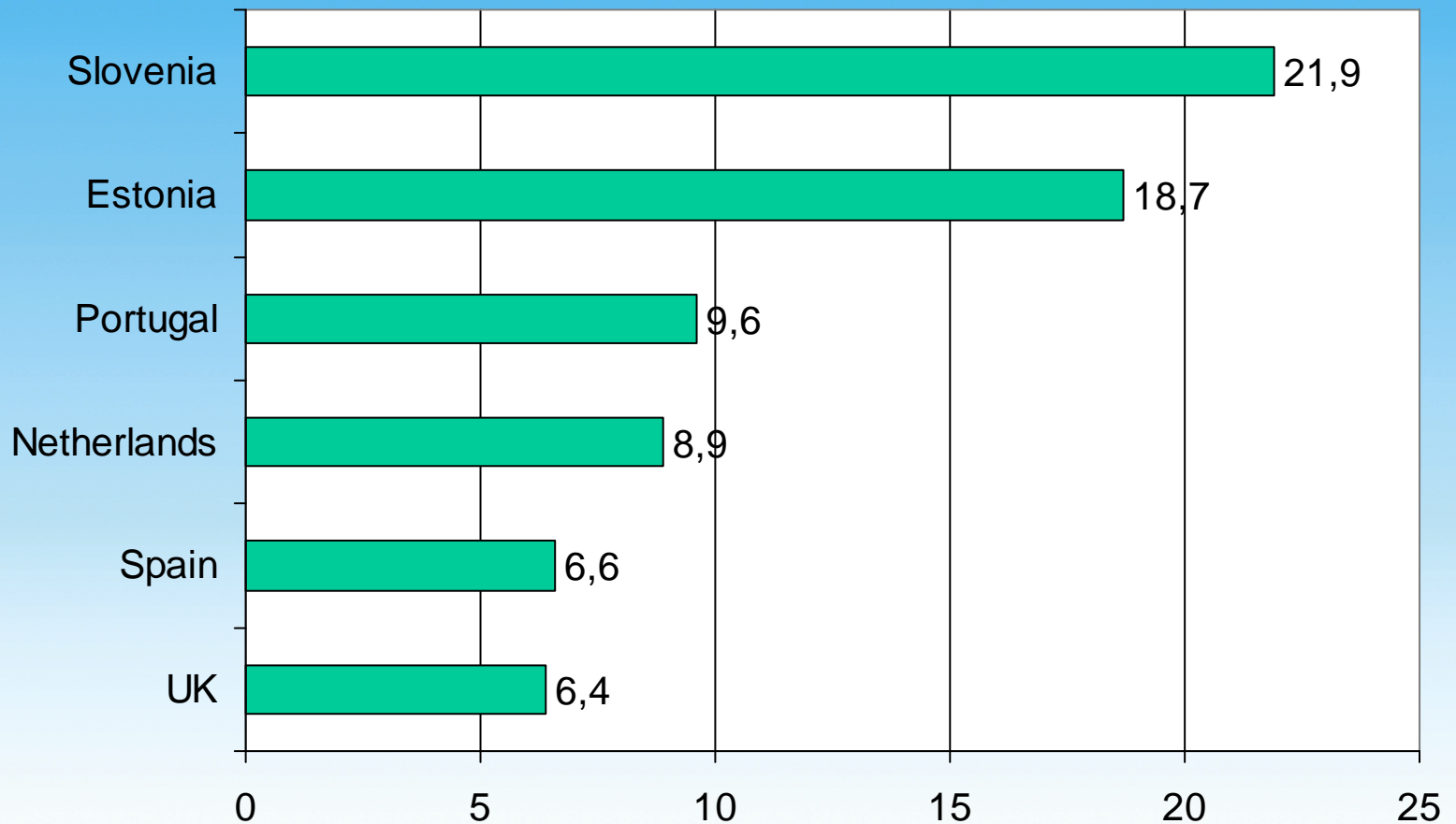


Results: Prevalence of major depression in Europe

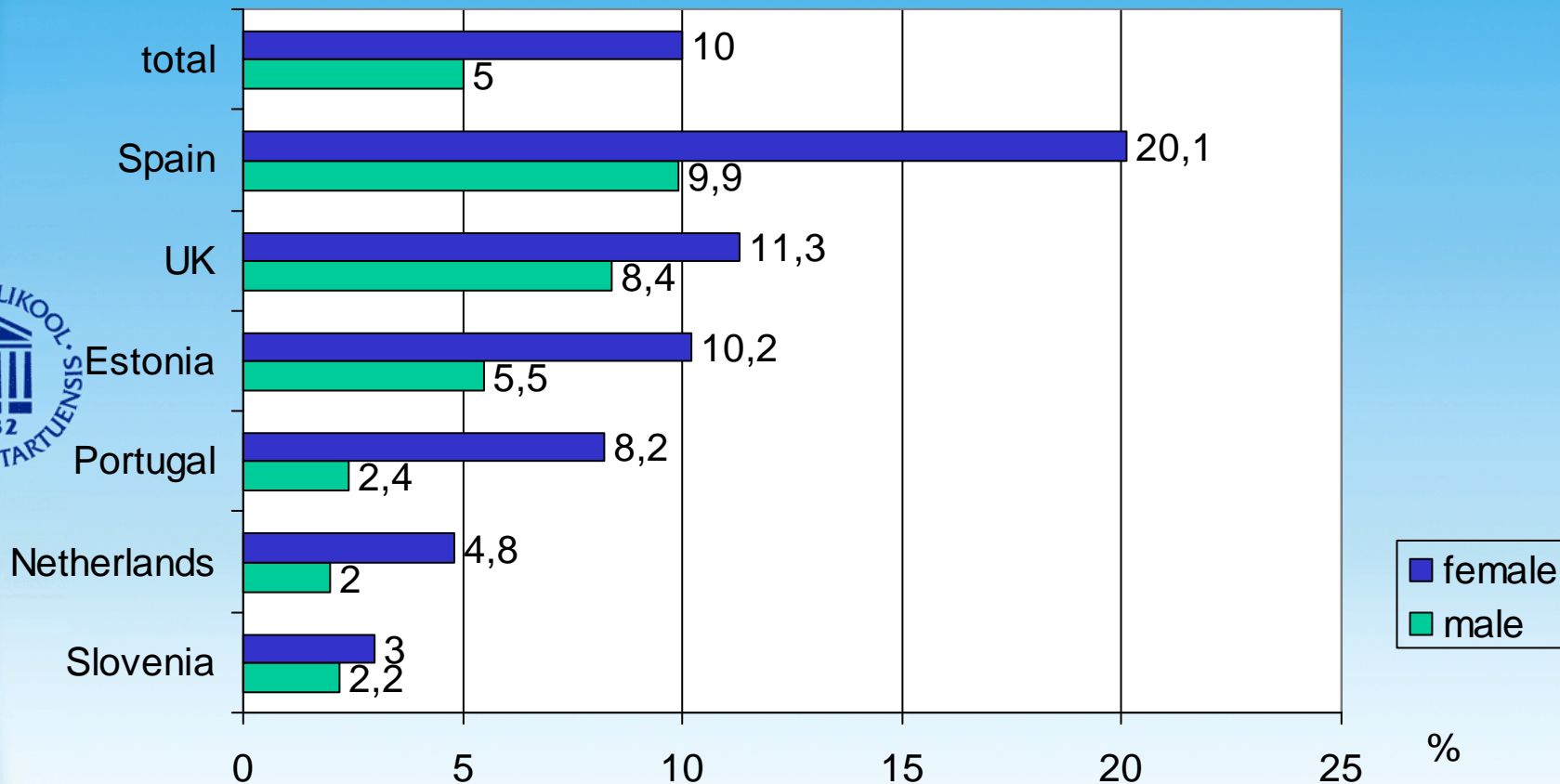


Euract council meeting, Cyprus,
10 Oct 2008

Suicide and intentional self-harm, per 100000 (WHO mortality statistics, 2005)

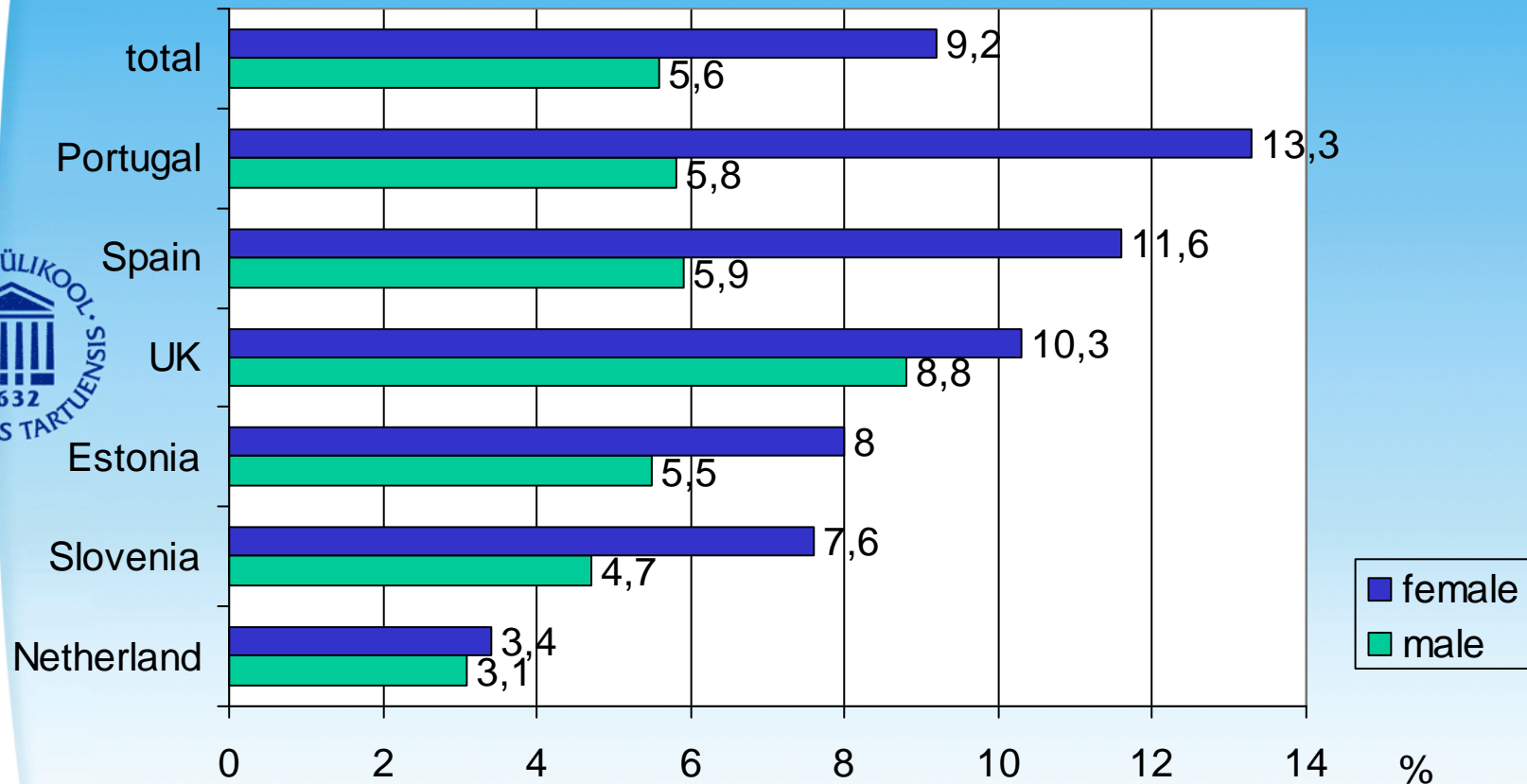


Prevalence of anxiety syndrome

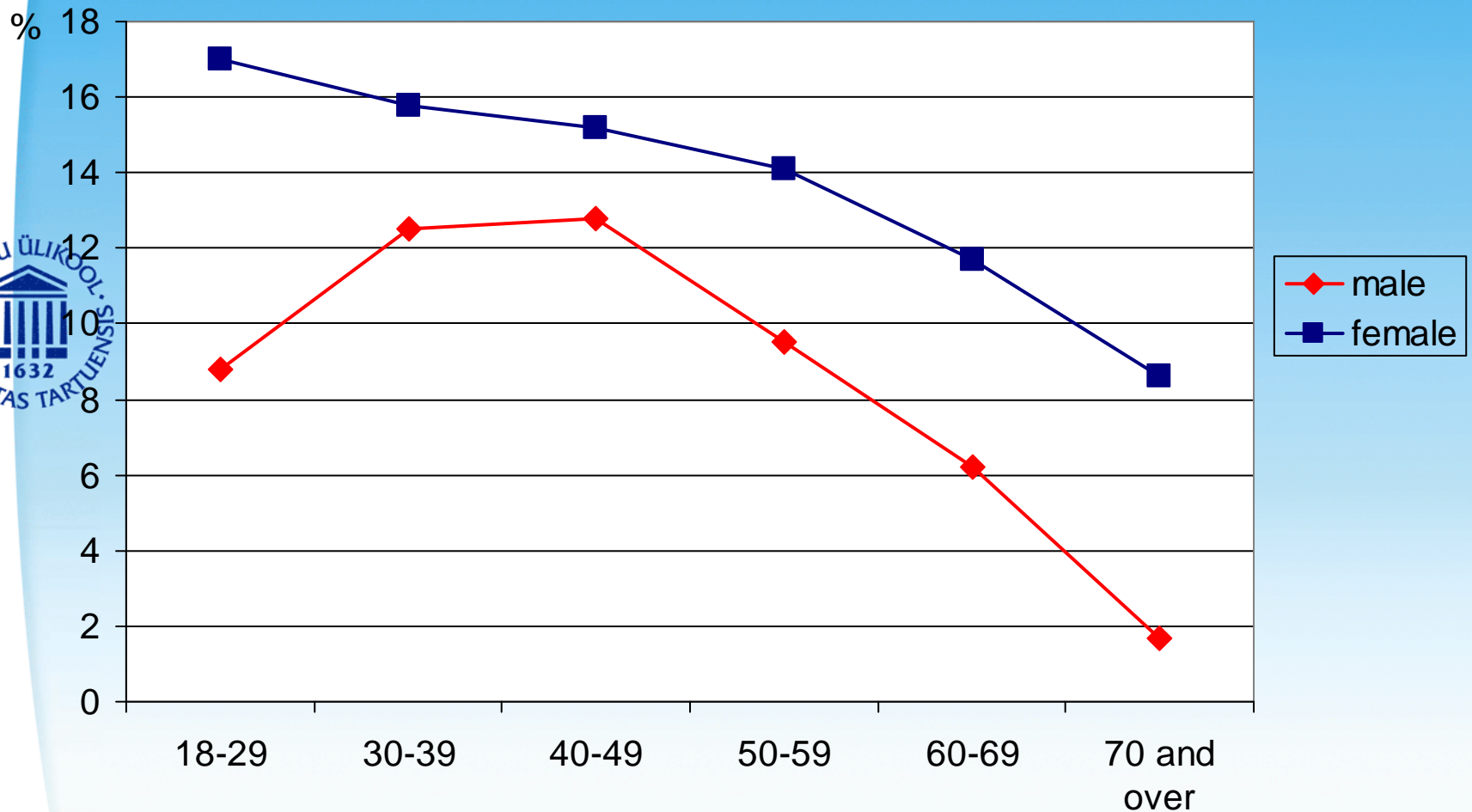


Euract council meeting, Cyprus,
10 Oct 2008

Prevalence of panic syndrome

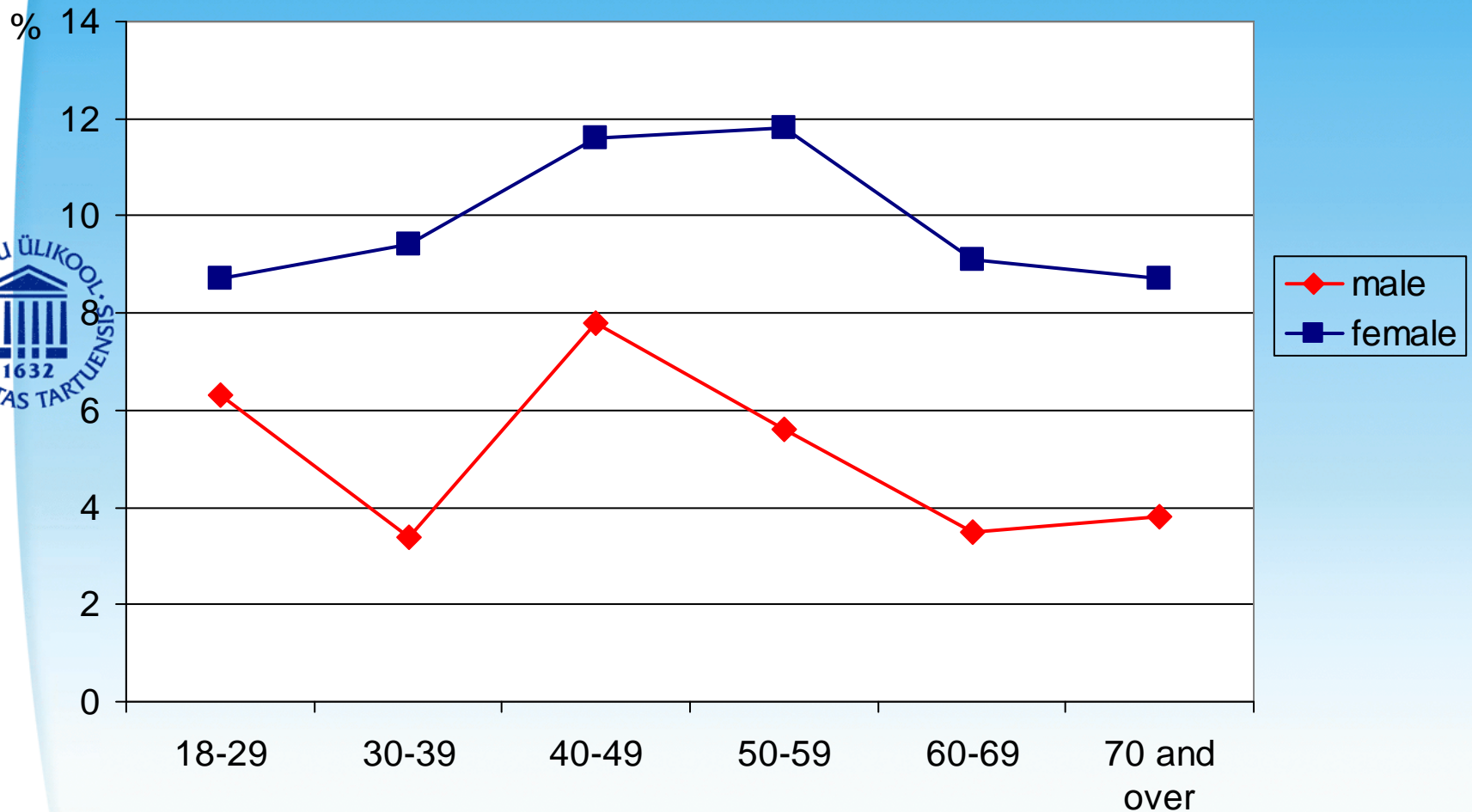


Depression and age



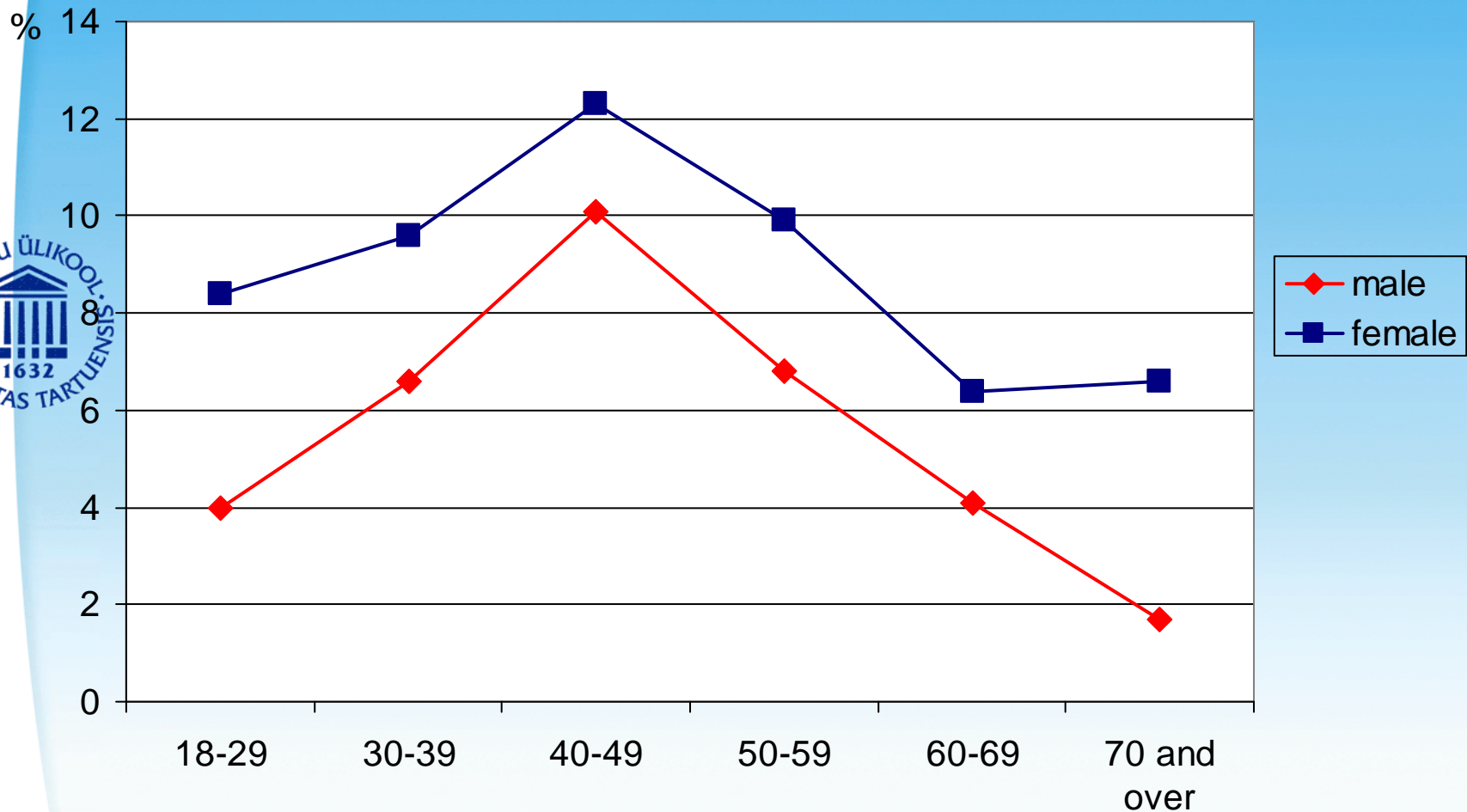
Euract council meeting, Cyprus,
10 Oct 2008

Anxiety and age



Euract council meeting, Cyprus,
10 Oct 2008

Panic syndrome and age



Euract council meeting, Cyprus,
10 Oct 2008

Conclusion

- Depression is more frequent problem than it was expected in general practice in Europe

Prevalence of common mental disorders in people attending their general practitioners varies significantly between European nations

- There is a significant variation in common mental disorders with age



Feel free to read more...

- M King et al. Prevalence of common mental disorders in general practice attendees across Europe. Br J of Psychiatry 2008; 192: 362-367
- M King et al. Prediction of depression in European general practice attendees: the PREDICT study. BMC Public Health 2006

